



# Solar powered small cells *RED SEA Capabilities*



# The Red Sea Projects and AMAALA are the world's most ambitious tourism and hospitality projects

Both projects, born out of Vision 2030, will position Saudi Arabia on the global tourism map



Setting new standards in regenerative development



Two exquisite luxury destinations created around one of the world's last hidden natural treasures



Positioning Saudi Arabia on the global tourism map



Strategically  
Located

Both projects are strategically located  
at the crossroads of Europe, Asia, the  
Middle East and Africa

Project  
Attributes



(KM2) Total Area	28,000	4,200
Proximity to Jeddah (KM)	~500	~700
Coastline Length (KM)	~200	~100

Destination  
Attributes



Eight-hour flight for 85% of  
the world's population



Only year-round resort  
destinations in the GCC



250 Million people  
within 3 hours



Dedicated international airports  
for each project will ensure  
connectivity to major hubs and  
global source markets



Year-round destination, with moderate  
weather and average of 32 Celsius in  
summer and little to no precipitation

THE RED SEA  
البحر الأحمر





1- Our Public-Private Partnership  
with World Leader in Renewable Energy

# 25 Years Utilities Concession

340 Mwac

Solar Power Installed  
Capacity

1,200 MWh

Battery Energy Storage  
System

50,000 m3/day

Sea Water Reverse Osmosis  
(Water Production)

18,315 m3/day

Wastewater Treatment

14,500 m3/day

Treated Sewage Effluent for  
Irrigation

32,500 RT

District Cooling  
System

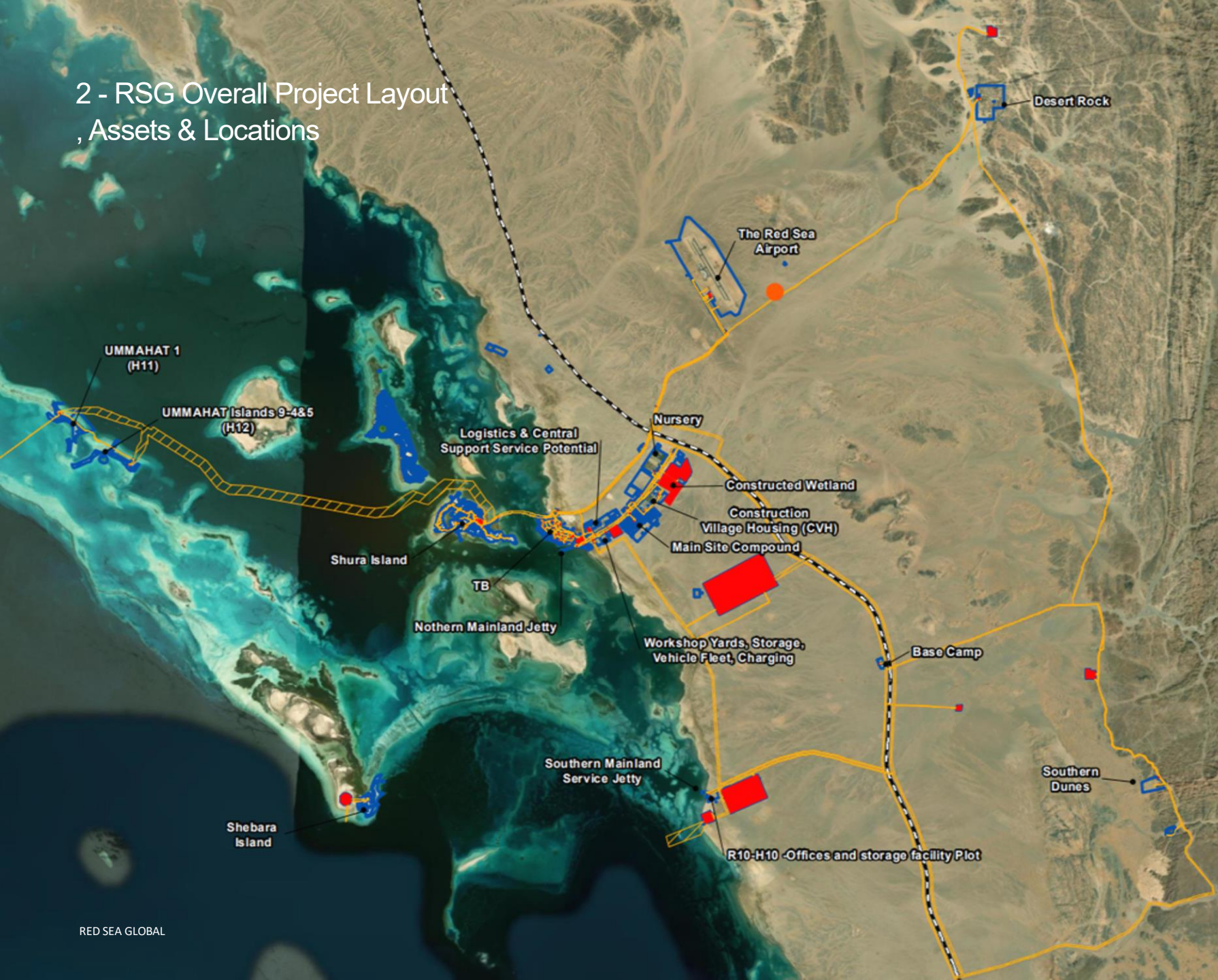
32,500 RT

District Cooling  
System





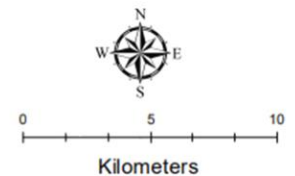
## 2 - RSG Overall Project Layout , Assets & Locations



### Site Wide TRSP Assets PPP Plots & Easements

#### Legend

- PPP Approved Plots
- Approved PPP Utility Corridors
- Highway 5
- TRSDC Road
- TRSDC Lands
- TRSP Plots



File Ref:  
**R13-000-TRS-PDF-GS-0001-A05**

Status:	Approved
Drawn by:	RS
Checked by:	SK
Approved by:	IW
Scale:	1:200,000
Date:	08/02/2023

Coordinate System:  
WGS\_1984\_UTM\_Zone\_37N



7 - Solar Farm – Micro Grid

Desert Rock



Shebara



Southern Dunes

Assets	Solar Farm Capacity	Area (m <sup>2</sup> )	Solar PV Panels/ Modules	Distribution Cabling (km)	BESS Units	BESS Capacity	ICE Units
Solar Farm at Desert Rock	6 MWp (DC)	198198.1	228,592	690	9	5MWac (18.306MWh*)	2 x 1.89*MWac
Solar Farm at Southern Dunes	6 MWp (DC)	198103.8	497,952	1,540	8	5MWac (16.256MWh*)	2 x 1.89*MWac
Solar Farm at Shebara	6 MWp (DC)	282618.3	11,312	51	10	5MWac (19.232MWh*)	2 x 1.259*MWac

Notes: MWp - Megawatt-Peak | DC – Direct Current | M<sup>2</sup> -Square Meter  
\*Total Installed Capacity per location



Outdoor Deployment





## In-Door Deployment RSI By ACES







THANK YOU  
*Visit Red Sea*